

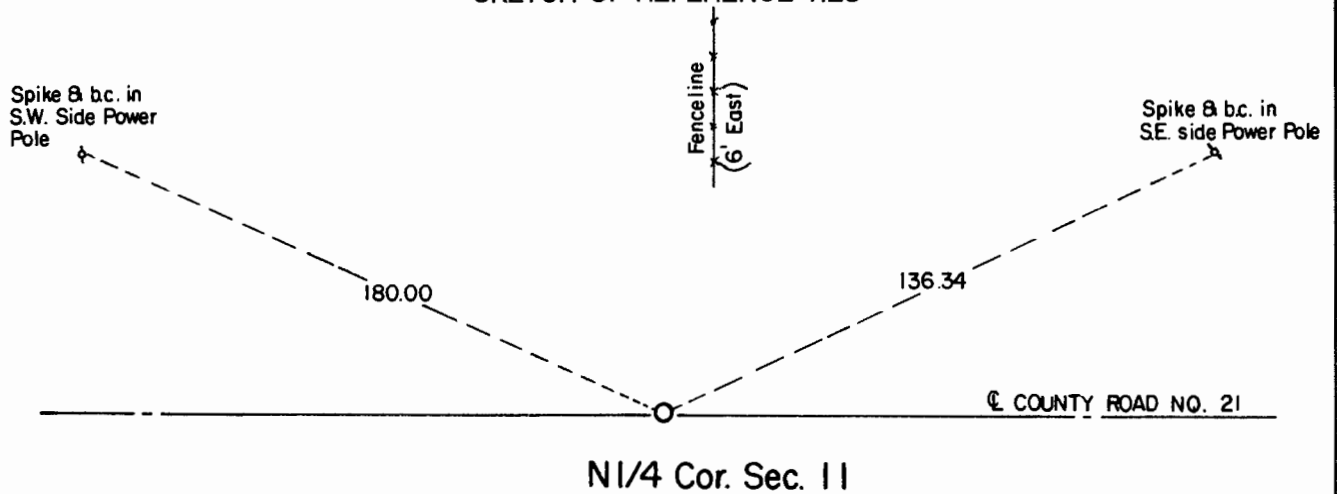
CERTIFICATE OF LOCATION OF GOVERNMENT CORNER

North Quarter Corner of Section 11, Township 108, Range 41 5th P.M.

STATE OF MINNESOTA, County of Murray.

Statement: Aug. 2, 1989 - Found 3/4 inch x 5 in iron re-rod, a 12 inch x 5 inch diameter concrete monument and a 12 inch x 9 inch x 10 inch stone below the road surface. Placed Mn/DOT Cast Iron Monument at the road surface.

SKETCH OF REFERENCE TIES



Statement of evidence relative to this corner location is on the back of page.

I hereby certify that this document and the data contained herein was prepared by me or under my direct supervision and that I am a duly Registered Land Surveyor under the laws of the State of Minnesota.

Duane A. Bonnema

Nov 6, 1989

Date

Minnesota Registration No. 14895

OFFICE OF THE COUNTY RECORDER
COUNTY OF MURRAY NOV 15 1989

I hereby certify that this document was filed in the County Recorder's office at ___ M. on the ___ day of ___ A.D., 19__

County Recorder

By _____, Deputy

DOCUMENT NO. _____

North Quarter Cor. Sec. 11 T108N-R41W

Statement:

- September 1861 Original Government Land Office Surveyor L. G. M. Fletcher records in his field notes, "set post in mound with trench pits and a charred stake."*
- Date Unknown The Murray County Highway Engineer's Office records in the County Surveyor's Record Book "Stone" and then records witness ties to the Corner.*
- April 18, 1979 The Murray County Highway Engineer's Office records that they found "Concrete Monument" 17" below grade and placed P.K. Nail in bituminous surface. They also established witness ties to the Corner.*
- Aug. 2, 1989 Duane A. Bonnema, LS 14895, found a P.K. Nail placed in the pavement surface above a 3/4 in. x 5 in. iron re-rod which was 1.8 ft. below the pavement surface. A 12 in. long x 5 in. dia. concrete monument was found 3 ft. below the paved surface which is 17 inches below subgrade. Found a 12 in. x 9 in. x 10 in. stone 3.5 ft. below the paved surface. Placed a Minnesota Department of Transportation Cast Iron Monument at the pavement surface.*